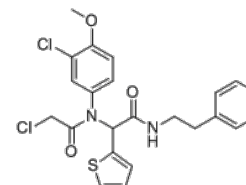


Product Name : ML-162
Cat. No. : PC-70154
CAS No. : 1035072-16-2
Molecular Formula : C₂₃H₂₂Cl₂N₂O₃S
Molecular Weight : 477.4
Target : Ras
Solubility : 10 mM in DMSO



Biological Activity

ML-162 (ML162) is a small-molecule probe that selectively kills cells induced to express **mutant RAS**, inhibits BJeLR (expressing HRAS G12V) cell lines with IC₅₀ of 25 nM.

ML-162 displays 23-fold sensitivity over BJeH-LT (isogenic to BJeLR without HRAS G12V) cell lines.

ML-162 is a useful tool for identifying oncogene-specific pathways and targets in cancer cells.

References

Weiwier M, et al. *Bioorg Med Chem Lett*. 2012 Feb 15;22(4):1822-6.

Bittker JA, et al. Probe Reports from the NIH Molecular Libraries Program [Internet].

Caution: Product has not been fully validated for medical applications. Lab Use Only!

E-mail: tech@probechem.com